



GROWING GUIDE

SUMMER/FALL 2025



Anderson County
SOIL & WATER
CONSERVATION DISTRICT



ANDERSON COUNTY
LIBRARY SYSTEM
SOUTH CAROLINA

WELCOME TO THE SEED LIBRARY!

Whether you're a seasoned gardener or just curious about growing your own food, the Seed Library is back this fall with fresh opportunities to dig in.

Thanks to our ongoing partnership with the Anderson County Soil & Water Conservation District (ACSWCD), this program continues to connect our community with tools for food and environmental sustainability.

Since its launch in 2020, the Seed Library has grown steadily and now offers more than 40 varieties of vegetables, herbs, and flowers each season. With just a valid library card, you can borrow up to five seed packets to plant at home. It's simple, free, and fun.

Can't make it to the Main Library? No problem. Each branch will host the Traveling Seed Library (TSL) for one week. See the TSL schedule on page 3 to find out when it will be at your closest branch.

Looking to learn more? We partner with organizations such as Clemson Extension, the ACSWCD, and local Master Gardeners to offer programs on gardening, sustainability, and more. Check out upcoming programs for adults on page 3, or browse the Event Guide and online calendar for the latest updates.



HOW IT WORKS



LOOK UP

Research to see which seeds are right for you. Use the Growing Guide and other library resources to help with planning your garden this season!



PICK OUT

Come to the library to pick out your seeds. You can check out up to 5 packets at a time with a valid library card.



PLANT IT

The moment you've been anticipating! Seek guidance from library resources for valuable tips and tricks on your gardening journey.



GROW IT

Plant the seeds and enjoy what grows! At the end of the growing season, save the seeds from the plants and return a portion of the seeds to the library to keep the Seed Library growing.

UPCOMING GARDENING PROGRAMS

GROWING HEALTH

TUESDAYS, JULY 15 & SEPTEMBER 16, 2025

5:00 PM - 6:00 PM

@ PENDLETON LIBRARY

GARDENING IN THE FALL

THURSDAY, AUGUST 7, 2025 - 6:00 PM - 7:00 PM

@ ANDERSON MAIN LIBRARY

HERBAL TEAS WITH NATIVE PLANTS

THURSDAY, AUGUST 21, 2025 - 5:30 PM - 6:30 PM

@ ANDERSON MAIN LIBRARY

Visit our [Event Calendar](http://www.andersonlibrary.org/events) at www.andersonlibrary.org/events
or contact branch to register.



FALL 2025 SCHEDULE

COMING SOON
TO A BRANCH
NEAR YOU!



July 21 - July 26

**@ Lander
(Williamston)**

July 28 - August 1

@ Westside

August 4 - August 9

@ Piedmont

August 11 - August 16

@ Belton

August 18 - August 23

@ Pendleton

August 25 - August 30

@ Powdersville

September 2 - Sept. 6

@ Iva

September 8 - Sept. 13

**@ Jennie Erwin
(Honea Path)**

THE TRAVELING SEED LIBRARY FEATURES A SELECTION OF SEED VARIETIES AVAILABLE.

SEED SAVING

Summer is the perfect time to start thinking about seed saving! Easy to grow veggies and herbs like tomatoes, peppers, basil, okra, and beans thrive in our South Carolina gardens. They are also great candidates for saving seeds! As your plants begin to produce, set a few aside to fully ripen for seed collection. Not only is it budget friendly, but it helps preserve varieties that do especially well in our Zone 8a/8b climate. Whether you're planning a fall harvest or getting a jump on next year, seed saving is a simple way to grow smarter!



SEED SAVING MADE SIMPLE

Grow now, harvest later—again and again!



EASY STARTERS

Tomatoes, basil, beans, and okra are beginner friendly plants that make seed saving a breeze.



WHEN TO START

Begin collecting seeds from your summer crops now. For fall, look for seeds from dill, collards, and mustard greens.



GOOD FOR POLLINATORS

Letting some plants flower helps you and the bees—pollinators love it when you let your garden go to seed!



SMART STORAGE

Dry seeds fully and store them in paper envelopes or jars. Keep them labeled and cool—your fridge is a great option!



FUN FACT:

Some seeds—like beans and okra—are ready to save when the pods dry right on the plant. No fuss required!

HELPFUL HINTS

FROST DATES - ANDERSON COUNTY, SC

Average Last Spring Frost: April 1 - April 10

Average First Fall Frost: November 1 - November 10

A frost date marks the typical timing of the final light freeze in spring or the initial light freeze in fall.



Freeze temperatures are categorized by their impact on plants:

- **Light freeze:** 29° to 32°F (-1.7° to 0°C) – kills tender plants.
- **Moderate freeze:** 25° to 28°F (-3.9° to -2.2°C) – highly damaging to most vegetation.
- **Severe freeze:** 24°F (-4.4°C) and below – causes extensive damage to garden plants.

SOURCES: ALMANAC.COM & PLANTMAPS.COM

TEST YOUR SOIL

Test your soil before reaching for the fertilizer! **Soil Test Kits** are available for free checkout at the Main Library and select branch LEAP Stations. Reach out to the library for availability.



Understanding your soil's unique needs is key to growing a vibrant garden. With a simple test, you can tailor your fertilization and help your plants thrive.

For a more detailed analysis, the **Anderson County Clemson Extension Office** offers low-cost soil testing. Call (864) 226-1581 for more details.

WHAT TO KNOW

FOLLOW THE COLOR KEY

Our color-coded guide is an easy way to pick the types of seeds you are interested in planting.



Choose from flowers, herbs, fruits, and vegetables.

PLANTING & HARVESTING

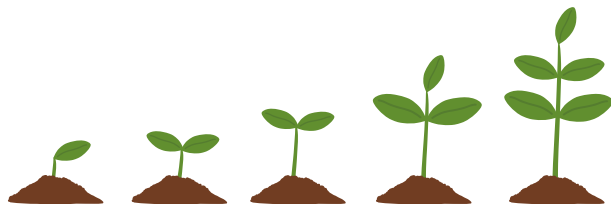
Be sure to plant and harvest according to the guide in order to get the most out of your seeds. Pay special attention to notes on the seed envelopes for certain varieties.

- **Early Spring:** February - March
- **Late Spring:** April - May
- **Summer:** June-August
- **Fall:** September-October
- **Winter:** November-January
- **Full sun:** Six or more hours a day
- **Partial sun:** Between four and six hours a day
- **Partial shade:** Between two and four hours a day
- **Shade:** Less than two hours a day



KNOW YOUR ZONE

According to the 2023 USDA Plant Hardiness Zone Map, Anderson County is in the **8a-8b hardiness zone**. Enter your zip code in the Quick Zip Code Search box at planthardiness.ars.usda.gov to find out more.



Plant Type	Plant Depth	Sun or Shade	When to Plant	When to Harvest
ARUGULA	1/8"	PART OR FULL SUN	MAR-APR, SEP	30-45 DAYS
BASIL	1/4"	PART OR FULL SUN	MAR-MAY, LATE AUG-SEP	40-60 DAYS
BEANS - BUSH	1"	FULL SUN	LATE APR, EARLY AUG	50-75 DAYS
BEANS - POLE	1"	FULL SUN	LATE APR, EARLY AUG	60 DAYS
BEETS	1/2"	PART OR FULL SUN	APR-MAY, AUG-EARLY SEP	50-65 DAYS
BROCCOLI	1/2"	FULL SUN	FEB-EARLY APR, LATE JUL-EARLY SEP	55-65 DAYS
BRUSSELS SPROUTS	1/4"	FULL SUN	APR, SEP	80-100 DAYS
BUTTERFLY WEED	1/4"	FULL SUN	APR-MAY, SEPT-OCT.	N/A
CABBAGE	1/4"	FULL SUN	LATE FEB-APR LATE JUL-EARLY SEP	50-75 DAYS
CANTALOUPE	1"	FULL SUN	LATE APR-EARLY JUL	70-90 DAYS
CARROT	1/4"	FULL SUN	MAR-SEPT	65-75 DAYS
CAULIFLOWER	1/2"	FULL SUN	EARLY MAR, EARLY JUL	65-80 DAYS
CHIVES	1/4"	PART OR FULL SUN	MAR-APR, SEP-OCT	80-90 DAYS
CILANTRO	1/4" - 1/2"	FULL SUN	MAR-JUN, AUG-OCT	30-45 DAYS
COLLARD GREENS	1/4"	FULL SUN	MAR-APR, JUL-AUG	60-80 DAYS
CORN	1"	FULL SUN	LATE APR	70-90 DAYS
CUCUMBER	1"	FULL SUN	LATE APR-MAY, EARLY JUL	50-60 DAYS
DILL	1/8"	PART/FULL SUN	LATE APR-MAY, LATE AUG-SEPT	30-45 DAYS
EGGPLANT	1/4"	FULL SUN	MAY-EARLY SEP	70-100 DAYS
KALE	1/4"	FULL SUN	FEB-MAR, AUG-SEP	60-70 DAYS
LETTUCE	1/8"	FULL SUN	MAR, AUG-SEP	50-60 DAYS
MARIGOLD	1/8"	FULL SUN	APR-MAY	N/A

Plant Type	Plant Depth	Sun or Shade	When to Plant	When to Harvest
Mint	1/4"	Full Sun	April	All Times
Morning Glory	1/4"	Full Sun	Apr-May	N/A
Mustard Greens	1/4"	Full Sun	Feb-Early Mar, Aug-Sep	40-50 Days
Okra	1/2"	Full Sun	May-Early Jun, Late Jul	55-85 Days
Onion	1/4"	Full Sun	Feb-Mar	60 Days
Oregano	1/8"	Full Sun	Late Mar-Sep	90-110 Days
Pansy Mix	1/4"	Full Sun	Mar-Sep	70-85 Days
Parsley	1/4"	Full Sun	Mar-Jun	70-90 Days
Peas - Bush	1"	Full Sun	Feb-Apr, Sep-Oct	50-75 Days
Peppers	1/4"	Full Sun	May, Late Jul	60-80 Days
Poppy Mix	1/2"	Full Sun	Sep-Oct	70-90 Days
Pumpkin	1"	Full Sun	May-Jun	90-120 Days
Radish	1/2"	Full Sun	Feb-May, Aug-Early Sep	20-30 Days
Sage	1/2"	Full Sun	Apr-May	75 Days
Spinach	1/2"	Full Sun	Late Feb-Early Mar, Late Aug-Early Sep	30-50 Days
Squash	1"	Full Sun	Late Apr-Early May, Early Jul	45-60 Days
Sunflower	1"	Full Sun	Late Apr-May	85-100 Days
Swiss Chard	1/2"	Full Sun	Late Feb-Early Mar, Early Oct	50-65 Days
Tomato	1/4"	Full Sun	Late Apr-May, Late Jul	60-70 Days
Turnip	1/4"	Full Sun	Late Feb-Mar, Sep	40-65 Days
Turnip Greens	1/4"	Full Sun	Late Feb-Mar, Sep	45 Days
Watermelon	1/2"	Full Sun	Late Apr-Early Jun	80-90 Days
Wildflower Mix	1/8"	Full Sun	Sept-Dec	60-80 Days
Zinnia	1/4"	Full Sun	May-Aug	70 Days
Zucchini	1/2"	Full Sun	Mid July	35-55 Days

HELPFUL RESOURCES

ANDERSON COUNTY LIBRARY - SEED LIBRARY

WWW.ANDERSONLIBRARY.ORG/SEED-LIBRARY



ANDERSON COUNTY SOIL & WATER CONSERVATION DISTRICT
- SEED LIBRARY

WWW.ANDERSONSWCD.ORG/SEED-LIBRARY

CLEMSON COOPERATIVE EXTENSION SERVICE

WWW.CLEMSON.EDU/EXTENSION

CLEMSON COOPERATIVE EXTENSION HOME & GARDEN
INFORMATION CENTER

HGIC.CLEMSON.EDU

SOUTH CAROLINA NATIVE PLANT SOCIETY

WWW.SCNPS.ORG

THE OLD FARMER'S ALMANAC

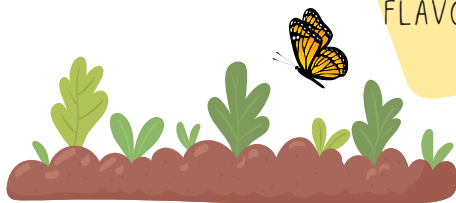
WWW.ALMANAC.COM

BURPEE SEEDS

WWW.BURPEE.COM

DID YOU KNOW?

PEPPERS CAN CROSS-POLLINATE EASILY: IF YOU SAVE PEPPER SEEDS, BE AWARE THAT SWEET AND HOT PEPPERS CAN CROSS-POLLINATE, WHICH MIGHT RESULT IN SURPRISING FLAVORS NEXT SEASON!



USEFUL CLEMSON HGIC FACTSHEETS

PLANNING A GARDEN FACTSHEET

HGIC.CLEMSON.EDU/FACTSHEET/PLANNING-A-GARDEN

STARTING SEEDS INDOORS FACTSHEET

HGIC.CLEMSON.EDU/FACTSHEET/STARTING-SEEDS-INDOORS

HOW CAN I HELP?



DONATE

The Seed Library is happy to accept donations of your locally saved seeds in any quantity. The seeds should be collected from your healthiest plants. We also are happy to accept your unused quantities of seeds from seed packets you might have purchased commercially.

Seeds saved from grocery store produce are not suitable for the Seed Library. This is because there's not enough information about how the plants were grown. Please put them in your compost bin instead.

Donations should be completely dried, packed, and clearly labeled. Donated seeds will be added to the Seed Library collection at the discretion of the Anderson County Soil & Water Conservation District.

You can donate seeds at any Anderson County Library Branch or at the Anderson County Soil and Water Conservation District building at 1521 Pearman Dairy Rd, Anderson, SC 29625.

VOLUNTEER



We are always looking for volunteers to help pack seeds!

If interested, please contact either the Anderson County Soil and Conservation District at (864) 844-8224 or the Seed Library Coordinator at the library at (864) 260-4500 ext. 108 or through email at seedlibrary@andersonlibrary.org.

For more information, visit:

<https://andersonswcd.org/seed-packing/>

THANK YOU

The Seed Library exists through a partnership between the Anderson County Library System and the Anderson County Soil and Water Conservation District.

It would not be possible without the support of generous volunteers and the following businesses and organizations:

ANONYMOUS DONORS
BAKER CREEK HEIRLOOM SEED COMPANY
CITY SEED AT THE STATION
GRIFF'S FARM & HOME CENTER
O'NEAL SEED COMPANY
PAUL THUNEMAN
SEED SAVERS EXCHANGE
SMITH'S FARM SUPPLY
TRACTOR SUPPLY ON HWY 28 BYPASS

In the **635** section in nonfiction, you will find a great assortment of books on all aspects of gardening to help on your journey, including: flowers, fruits and vegetables, herbs, organic gardening, seed saving, and more!



HAVE QUESTIONS?
EMAIL US!

SEEDLIBRARY@ANDERSONLIBRARY.ORG

